

Katie Sutrina-Haney

From: Communications and Marketing
Sent: Tuesday, November 17, 2015 9:05 AM
To: isu-community-L@listserv.indstate.edu; Employee Distribution List
Subject: ISU Today: Update office location and phone number in online directory

Having trouble seeing the message? Go [here](#) to view.



ISU Today
Tuesday, November 17, 2015

Announcements

[Update office location and phone number in online directory](#)

With priority registration currently underway, please ensure employee location and phone numbers are accurate in the online directory. Instructions are available.

[Faculty Commencement information](#)

Faculty participation is requested in the commencement ceremonies that will be held at noon Saturday, Dec. 12.

[Indiana State University Day at the Indiana Statehouse](#)

The American Democracy Project is preparing for ISU Day at the Statehouse Feb. 29. If you think students from your campus unit would be well suited to represent the university for this event, please contact Carly Schmitt, carly.schmitt@indstate.edu.

[Coffee with the Community](#)

Coffee with the Community will be discussing food disparity in the Wabash Valley.

[Fusion Spotlight Theater](#)

FUSION is a performing arts after-school program that works with middle and high school students to develop a show that will be performed on the last day of class.

[Refresh your course with straight forward design changes](#)

The live webinar is set for today. Begin to prepare for next semester with some new ideas that won't add to your workload.

[Tea Around the World](#)

Come and learn about tea traditions and preparation as well as sample teas from around the world.

[Seminar Wednesday: Efficacy of collaborative technologies \(working together without being together\)](#)

Joe Harder will give this presentation Nov. 18 from noon-1p.m. in Hulman Memorial Student Union 321.

Newsroom

[Athletic training students receive scholarships](#)

Three Indiana State University athletic training students have received scholarships from the Indiana Athletic Trainer's Association State Conference.

[The Forest grows](#)

With Indiana State men's and women's basketball seasons underway, The Forest prepares for an

Upcoming Events

[Fall break housing form \(Residential Life\)](#)

Tuesday, November 17, 2015 - 12:00pm

[Biology Departmental Seminar](#)

Tuesday, November 17, 2015 - 4:00pm

[Focus Indiana Information Session](#)

Tuesday, November 17, 2015 - 5:00pm

[University Symphony Orchestra, Erik Rohde, conductor](#)

Tuesday, November 17, 2015 - 7:30pm

[Teachers of Tomorrow](#)

Wednesday, November 18, 2015 - 8:00am

[Emeriti Luncheon](#)

Wednesday, November 18, 2015 - 11:30am

[Soup and Substance](#)

Wednesday, November 18, 2015 - 11:30am

[On This Day In Terre Haute History](#)

Wednesday, November 18, 2015 - 1:30pm

exciting student section to cheer on the teams at Hulman Center. Since April, membership has increased from 1,100 members to more than 1,500 student members.

[Visiting scholar recital set for Nov. 30](#)

Li Lidan of China will perform at 5 p.m. Nov. 30 in the Landini Center for Performing and Fine Arts recital hall at Indiana State University.

[Hines, President’s Medal recipients announced for winter commencement](#)

Mitchell Wasmund of Avon received the Hines Medal in recognition of the highest grade point average among winter graduates while Jordan Gillenwater of Bloomfield received the President's Medal for Leadership, Scholarship and Service.

[The Big Idea: The razing of Statesman Towers](#)

Recognized for their superior design when they were built in the late 60s, Statesman Towers — the tallest buildings on campus — would be undone because of their massive size.

[Take Back The Night](#)

Wednesday, November 18, 2015 - 6:00pm

[University Speaker Series:](#)

[Alexandra Cousteau](#)

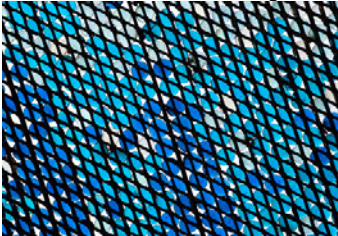
Wednesday, November 18, 2015 - 7:00pm

[Faculty Wind Quintet](#)

Wednesday, November 18, 2015 - 7:30pm

[View Calendar >>](#)

Photo of the Day



[Renewal](#)

Video



[Through The Eyes of An Artist](#)

As child growing up in Alaska and Maine, Nancy Nichols-Pethick would spend much of her time exploring the outdoors, whether it was building a dam with rocks or making creations from clay. That relationship to the natural world still influences her art.

The Office of Communications and Marketing produces **ISU Today**, the daily electronic newsletter for Indiana State University. **ISU Today** is provided to all faculty and staff via e-mail. Students and friends of the university may subscribe to **ISU Today**. [Submission and subscription information »](#)

How do I find previous ISU Today postings?

To find items which have been previously posted in ISU Today, search through the [ISU News Search](#).