

VITA

Your Name

TITLE OF PAPER – IF MORE THAN ONE LINE,
USE INVERTED PYRAMID FORM

A Thesis or Dissertation

Presented to

The College of Graduate and Professional Studies

Department of Your Department Name

Indiana State University

Terre Haute, Indiana

In Partial Fulfillment

of the Requirements for the Degree

Your Degree Name

by

Your Name

GradMonth Year

Your Name Year

Keywords: add five keywords here that you would use in a Web search to find this document

COMMITTEE MEMBERS

Committee Chair: Name, Degree

Committee chair title (faculty rank) of Department

Committee member institution

Committee Member: Name, Degree

Committee member title (faculty rank) of Department

Committee member institution

Committee Member: Name, Degree

Committee member title (faculty rank) of Department

Committee member institution

Committee Member: Name, Degree

Committee member title (faculty rank) of Department

Committee member institution

Committee Member: Name, Degree

Committee member title (faculty rank) of Department

Committee member institution

TABLE OF CONTENTS

COMMITTEE MEMBERS ii

ABSTRACT iii

PREFACE iv

ACKNOWLEDGMENTS v

LIST OF TABLES vii

LIST OF FIGURES viii

Title for Chapter 1 in APA Heading Level 1 1

APA Heading Level 2 1

Title for Chapter 2 2

APA Heading Level 2 2

APA Heading Level 2 3

Title for Chapter 3 4

APA Heading Level 2 4

References 1

Title of Appendix A 2

Title of Appendix B 3

LIST OF TABLES

Table 1 *Caption For Table 1. 2*

Table 2 *Caption for Table 2. 5*

LIST OF FIGURES

<i>Figure 1.</i> Caption for Figure 1.	3
<i>Figure 2.</i> Caption for Figure 2.	6

CHAPTER 2

Title for Chapter 2

Text text. Text text.

Table 1

Caption For Table 1.

Gender	Mean	SD
Men	22.7	9.4
Women	32.6	8.6
Not Answered	26.4	12.4

(Note: This is in the List of Tables style, and you must italicize the second line for APA style compliance. Use Shift-Enter between the two lines of the title to ensure that Word treats the Title line and the Caption line as one unit for the List of Tables. Make sure that the table does not extent into the right and left margins. Word typically extends tables 1/16 of an inch into each margin, so make sure that you adjust the sides of each table.)

APA Heading Level 2

Table 2

Caption for Table 2.

Variable	Pretest Mean	Posttest Mean	Subscale Mean
Red	22.1	28.6	12.4
Blue	18.5	27.5	11.4
Green	31.1	45.2	18.2

Note: $n = 27$

(Note: If you have columns of numbers with decimals, use a decimal tab to line them all up.

Highlight the column, select the decimal tab, and set the tab for that column. You can adjust as needed.)

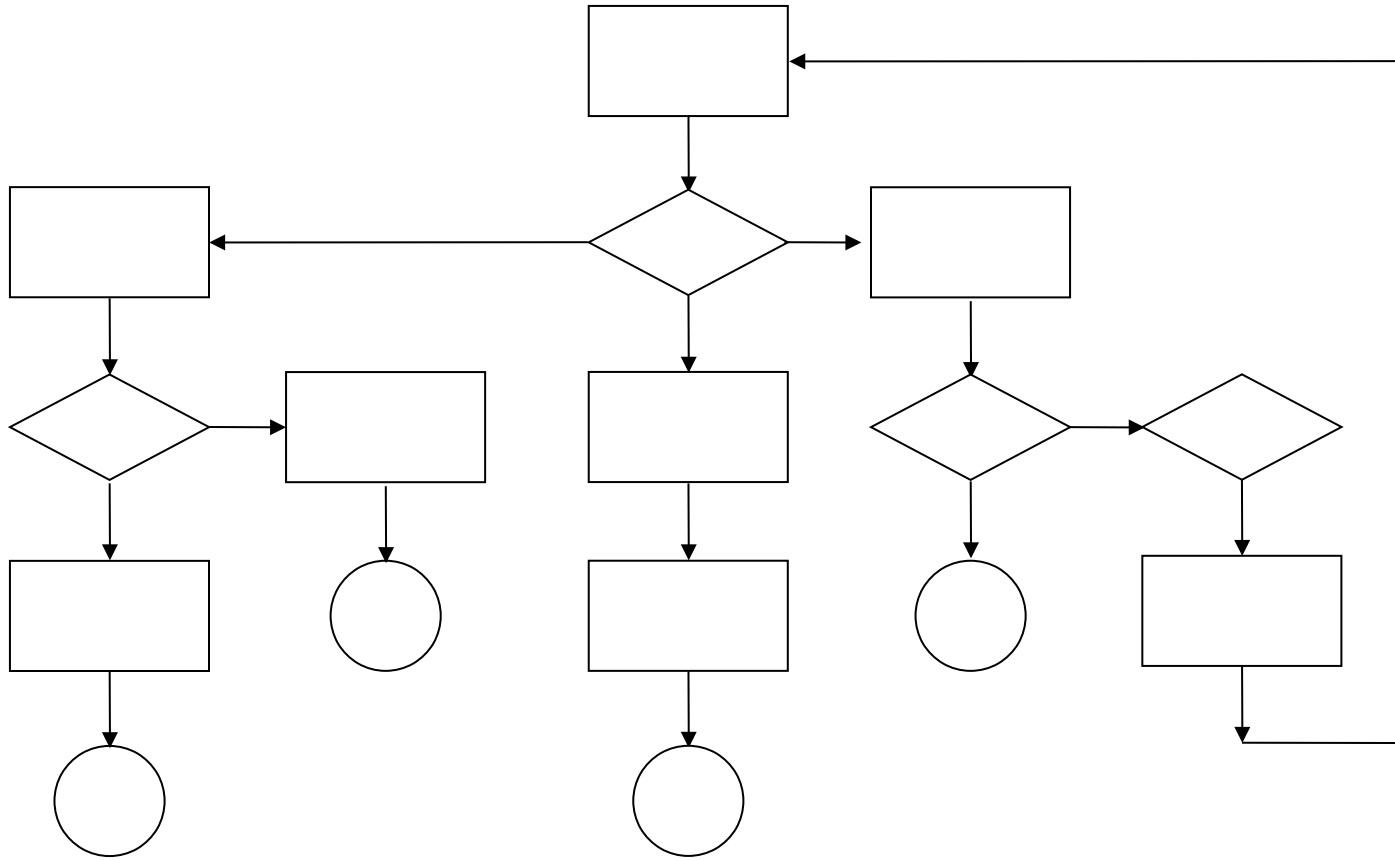


Figure 1.

Caption for Figure 2.

References

(Note: If you are hand managing your references type them as you would a paragraph. When all have been typed highlight them all and move the lower arrow (paragraph indent) on the ruler bar to adjust the indent and move the upper arrow to adjust the left margin.)

About this template

Writing a thesis or dissertation is a difficult experience without having to worry excessively about formatting. This template provides the basic front matter for a thesis or dissertation as well as a general format for the body and appendices. This template meets the minimum formatting standards for the College of Graduate and Professional Studies at Indiana State University.

This has been formatted using APA 6 style. Remove what you don't need, and modify material as required. Normal font for this document is Times New Roman 12 double spaced with no extra space before and after a paragraph.

Make sure to update the properties of this document. Click the Office Button, select Prepare, then select Properties, and make any needed adjustments.

To use this template for a thesis or dissertation proposal you must remove the unused sections. You can copy and paste them into your document later if and when you need them.